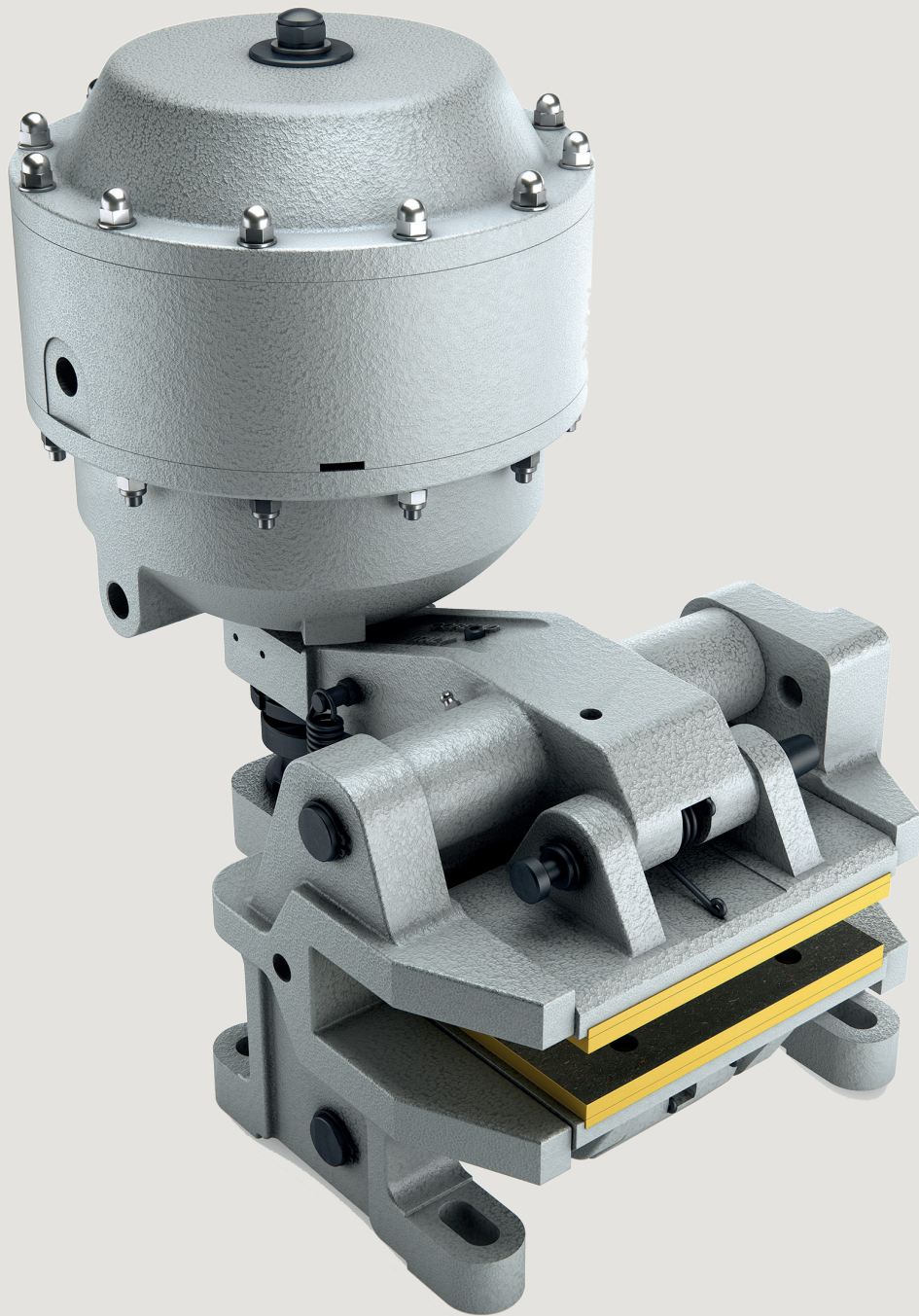
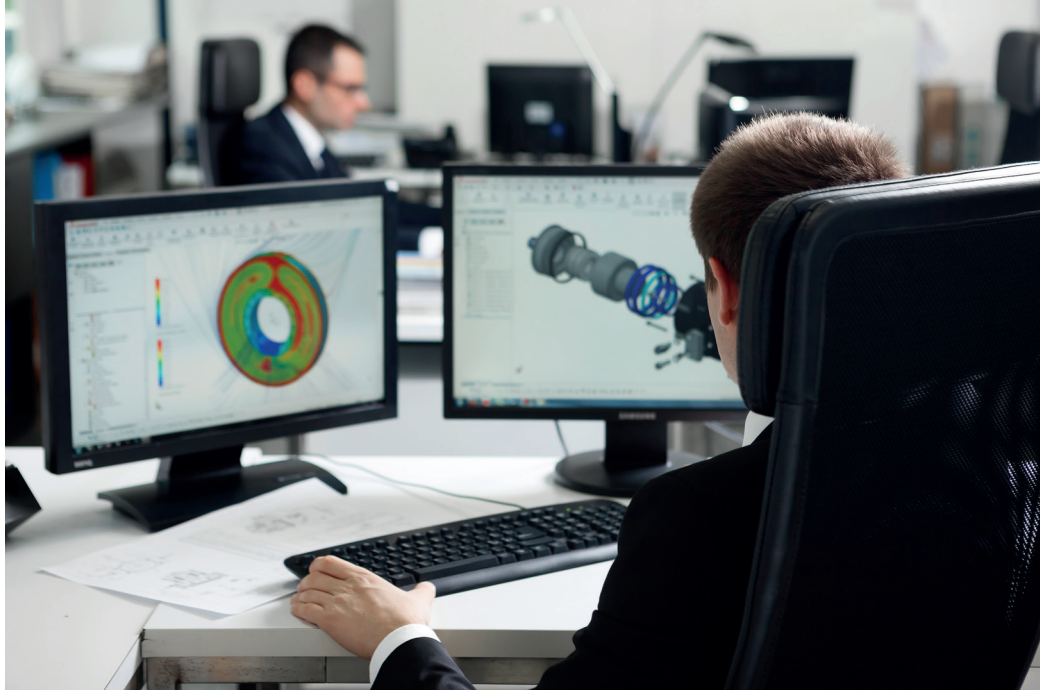


# Pneumatic Caliper Brakes





# Quality and Safety in Industrial Brakes

Coremo Ocmea draws on its long tradition in the manufacture of brakes and clutches for industrial, marine, oil & gas, energy and entertainment sector applications to look firmly to the future, to the realisation of services with a high degree of customisation: structured projects including products, technical support, maintenance and consulting.

## Our Services

---

### Design Services

Coremo's goal is to design and provide a braking solution, suitable for specific applications, through a brake selection process characterized by continuous R&D, cost optimisation, customisation and FEM analysis.

---

### Products

A wide range of brakes and accessories verified by both internal and external tests in order to guarantee their quality control. Hydraulic brakes, pneumatic brakes, multi discs brakes, water-cooled brakes, air-cooled brakes, customized brakes, clutches, hydraulic power units, discs, couplings, accessories, certification.

---

### Supply Chain Services

A large network of Agents and Distributors and an internal sales support allow us to reach the customer's needs and provide flexible service worldwide. Quick reaction, safety stock, short delivery terms, customized labeling.

---

### After Sales Support

Any help, question or special need after buying our products, are welcome and held in high consideration by our specialists. Technical support, dedicated training, spare parts availability, product reconditioning.

# Coremo´s Brakes Features

## Air Applied Pneumatic Caliper Brakes

Are normally chosen for stopping or tensioning. Forces vary depending on the pressure of the air supplied; the maximum operating pressure is 6 [bar].

Braking Force  
**from 0.6 kN to 37 kN**

## Spring Applied Pneumatic Caliper Brakes

Are normally chosen for emergency or parking. The clamping force of each model is generated by helical springs which allow low reaction times. All brakes operate up to a maximum pressure of 6 [bar].

Braking Force  
**from 1 kN to 37.5 kN**

## DUAL

(Combined, air & spring applied) pneumatic caliper brakes are chosen for applications that require both continuous and emergency braking. The advantage is that a single thruster can manage both brakings.

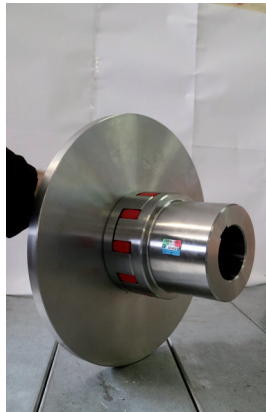
# Optional Products & Features

### Flat Discs



To be combined with the caliper brakes and improve their performances.

### Couplings



For fast, safe and easy brake fitting on the machine.

### On-Off Indicator



To indicate if the brake is open or closed.

### Special Paintings & Treatments



To meet specific enviromental condition or customer needs.

### Double Pads



To increase the heat dissipation through a larger friction surface.



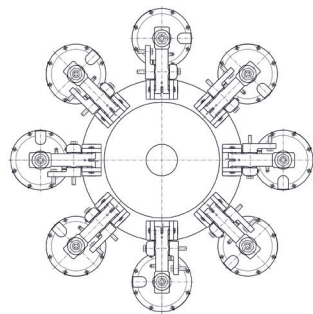
### Quick Exhaust Valve

To exhaust the air quickly, highly recommended for 3.5N/4N piston.

	MPA	MPB	A	B	C	D	E EL	F	G GL	MPA-N	A-N	B-N	D-N	E-N EL-N	F-N	G-N GL-N
Wear Compensation	-	-	●	-	●	●	●	●	●	●	●	●	●	●	●	●
Inclined Mounting Kit	○	-	●	○	●	●	●	●	●	○	●	○	●	●	●	●
Pads Self Alignment	●	●	●	●	●	●	●	●	●	●	●	●	●	●	●	●
Wear Indicator	-	-	○	○	-	○	○	○	○	-	○	○	○	○	○	○
Double Pads	-	-	○	○	-	-	-	-	-	-	○	○	-	-	-	-
On-Off Indicator	-	-	○	○	-	○	○	○	○	-	○	○	○	○	○	○
Retaining Screw	-	-	-	-	-	-	-	-	-	-	●	●	●	●	●	●

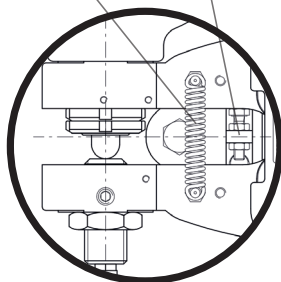
● Standard ○ Optional - Not Available

# Pneumatic Caliper Brakes



**Inclined Mounting Kit**  
To mount the brake in any position.

**Return Spring**  
To open the brake arms if braking is not required.



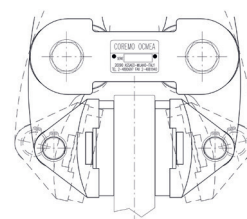
**Retaining Screw / Silencer**  
To guarantee safety during mounting operations / Air silencer once the brake is mounted.

1

**Thruster**  
Low weight aluminium thruster.

**INSIDE**  
**Piston**  
Steel piston with hardened rod pusher.  
**Spring Set**  
Modular spring set available to meet different clamping forces requirements.

2



**Pads self-alignment**  
To get the perfect alignment between pads and disc surface.

3

**Wear Compensation System**  
To guarantee high performance and safety conditions.

6

5

**Body**  
Spheroidal cast iron body. Designed to increase the thruster force.

4

**Friction Lining**  
Selection of friction material to optimize the braking system performance.

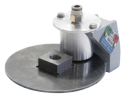
**Coremo's strong points have always lain in its precise, tailor-made design, constant product innovation and quality of components.**

## Air Applied Pneumatic Caliper Brakes

---



s - mac



micro



mpa



mpb



a



b



c



d



e



el



f



g

## Spring Applied Pneumatic Caliper Brakes

---



mpa - n



a - n



b - n



d - n



e - n



el - n



f - n



g - n



gl - n

## Dual

---



a - dual



d - dual



f - dual



g - dual

The product offering covers a clamping force range that meets the conditions required by the various applications. The quality of the product and its long life cycle are ensured by meticulous selection of materials, fifty years' experience, painstaking design with the latest 2D/3D software, FEM modellers and laboratory tests.

**Coremo Ocmea S.p.A.**

Via G. Galilei 12  
20090 Assago (MI)  
T + 39 02 488 06 97  
F + 39 02 488 19 40

**info@coremo.it**

**Coremo France**

12 av. des Prés  
78180 Montigny le Bretonneux - France  
T +33 01 48 94 76 72  
F +33 01 48 94 13 51

**contact@coremo.fr**